

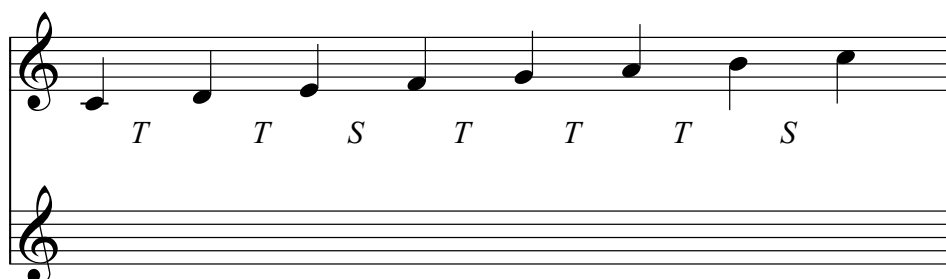
Name:

Date:

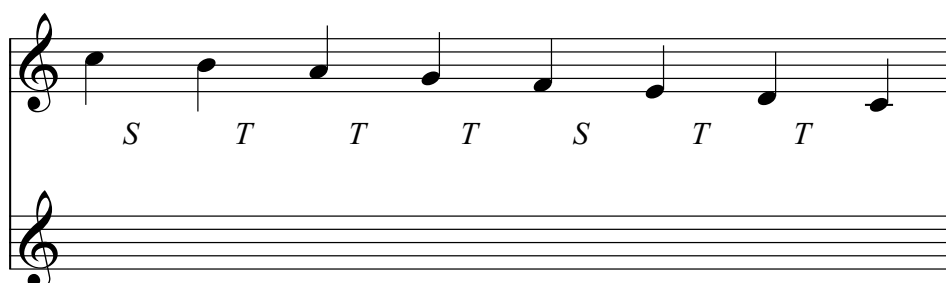
The scale of C Major

Key-note: C

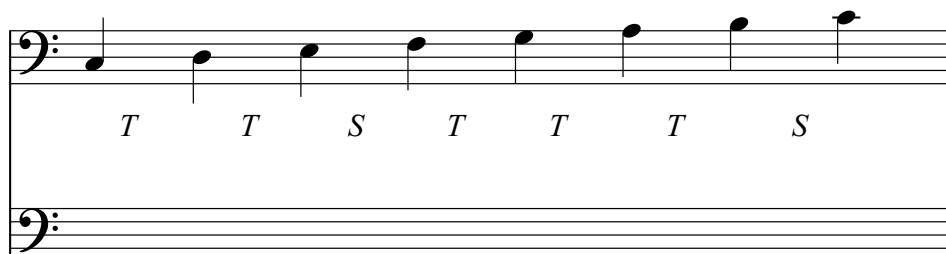
Copy the first staff of the C Major scale onto the staff below.



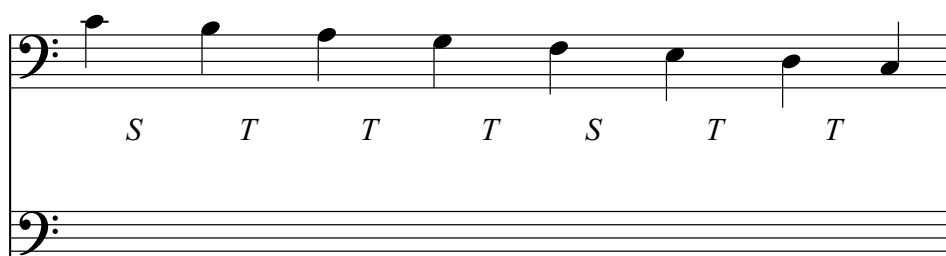
C Major Scale Ascending
in the Treble Clef



C Major Scale Descending
in the Treble Clef



C Major Scale Ascending
in the Bass Clef



C Major Scale Descending
in the Bass Clef

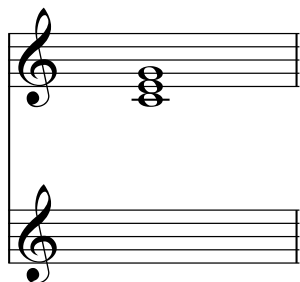
Note: Understanding T and S

"T" stands for **Tone** (also called a **Whole Tone** or **Whole Step**).

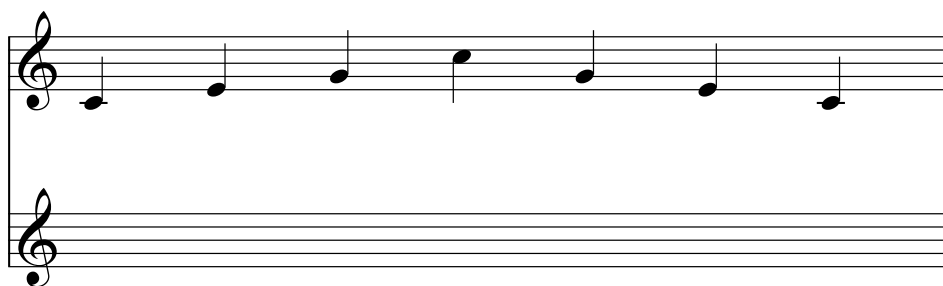
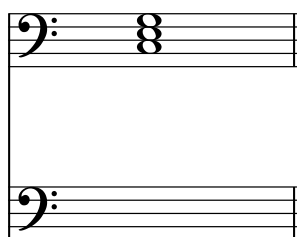
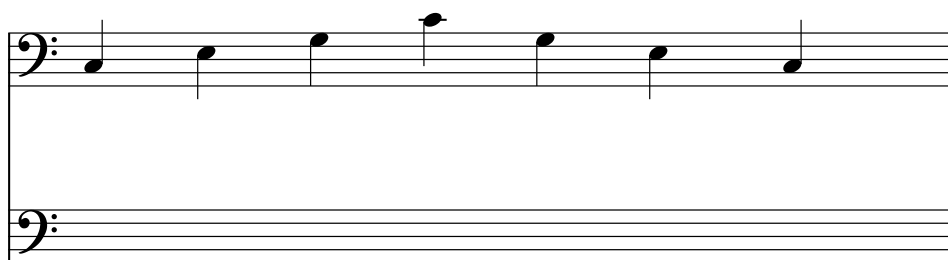
"S" stands for **Semitone** (also called a **Half Tone** or **Half Step**).

When you copy the scale onto the staff below, feel free to use whichever terms you are most familiar with **Tone/Whole Step** or **Semitone/Half Step** — whatever helps you understand and remember the pattern of the **Major Scale** more easily!

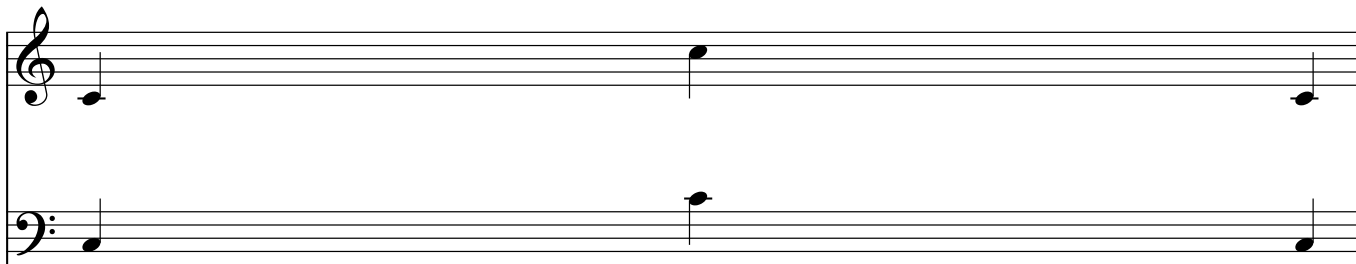
The **T-T-S-T-T-T-S** pattern is just a guide to help you follow the correct spacing between the notes.



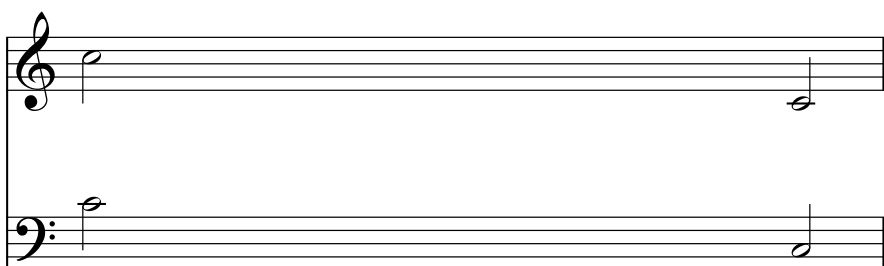
C Major - Tonic Triad

C Major Arpeggio
in the Treble ClefC Major Arpeggio
in the Bass Clef**Scale Degrees of C Major:****Tonic - 1st degree: C****Dominant - 5th degree:****Supertonic - 2nd degree:****Submediant - 6th degree:****Mediant - 3rd degree:****Subtonic - 7th degree:****Subdominant - 4th degree:****Tonic - 1st/(Octave-8th):**

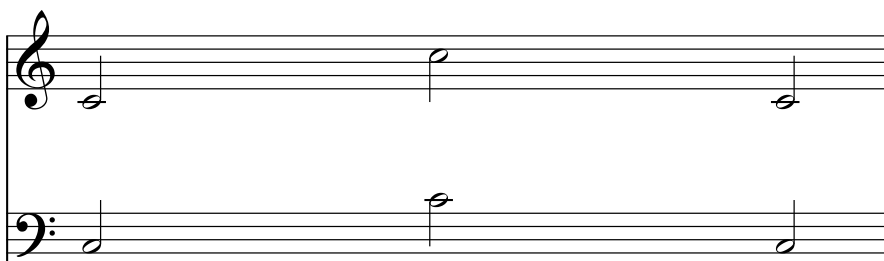
Fill in the missing notes to complete the C Major scale, ascending and descending.



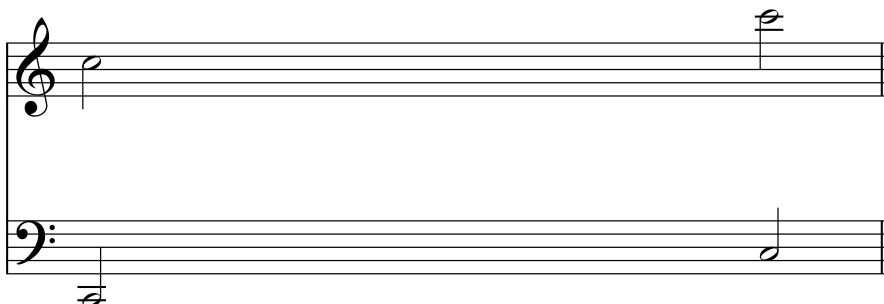
Fill in the missing notes to complete the C major and write the degrees of scale of the scale in half notes.



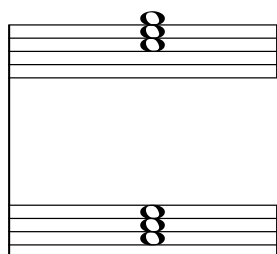
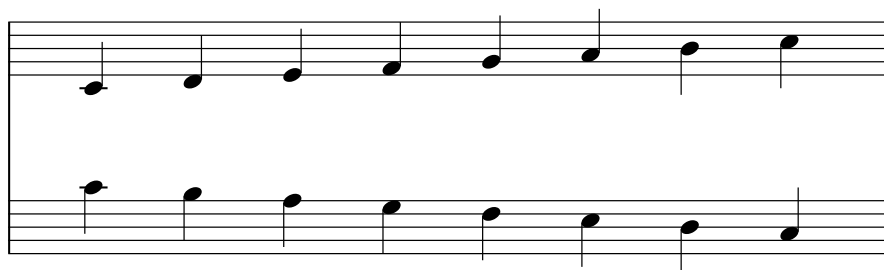
Fill in the missing notes to complete the C Major Arpeggio.



Fill in the missing notes to complete the C major and write the degrees of scale of the scale in half notes.



Identify the clef.



C Major - Tonic Triad

Copy the first staff showing the intervals between the tonic and the other scale degrees of the C Major scale onto the staff below.